



## Prime 30B/56B

Class B autoclave with greater load capacity, 30 and 56 liter capacity can be placed on a tabletop by compact design, steam generator increased 25% capacity, powerful vacuum pump, flash program, built-in water quality detection system, flexible and traceable sterilization data management system frees up your time for your works.

Prime B Series is designed for clinics looking to optimize time and increase productivity.



Reliable Sterilization Partner

## Designed for Medical and Dental Clinic

Prime B series aims to provide the busy caregivers an efficient, reliable, time-saving, and traceable sterilization solutions

### Your Time Should be freed up for more important works

- ◆ Touch Panel HMI - Human-Machine Interface.
- ◆ Digital Temperature & Pressure Control.
- ◆ Efficient air removal by the powerful vacuum system.
- ◆ Automatic sterilizer, including filling water, heating, sterilizing, exhausting, drying, and data records.
- ◆ Flexible operator ID and sterilization load management system.
- ◆ Flash program and efficient drying.
- ◆ Fully customized program can complete specific sterilization task.
- ◆ Water quality detection and alarm system.





## Maximize Free up your time

- Pre-heat function reduces cycle time
- Built-in memory automatically records data
- Cycle finish notification via your phone\*
- Automatic data classification & management\*

## Minimize Maintenance costs

- Maintenance notification
- 316L Pressure vessel anti-corrosion
- Online repair request\*

## Maximize Sterilization safety

- Operator ID and load check-in & check-out
- Leakage, Bowie-Dick, and Helix test cycle
- Water quality detection & alarm system
- Chamber door interlock system
- Pressure vessel compliant with ASME and PED

## Minimize Operation threshold

- Easy following program shortcuts
- One click to start
- Automatic cycle from start to finish

\* Features of SteriProcess IoT Server.  
The SteriProcess IoT Server is optional.

# Class B Performance in such a Compact Design

With a built-in steam generator, powerful vacuum pump, excellent user interface, and traceable sterilization tracking system.

After years of continuous effort, Sturdy has developed an autoclave that combines all the features clinics need most: performance, efficiency, and safety. Prime B provides better sterilization and a more humane and traceable sterilization process, it guarantees effective air removal and provides excellent drying performance, and minimizes heating time to reduce cycle time.

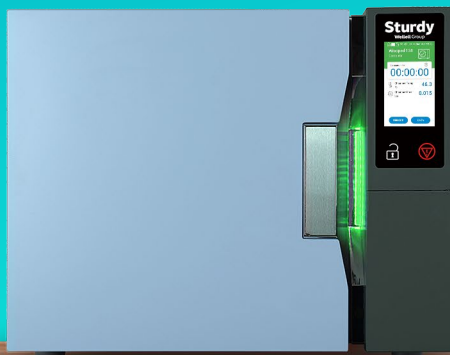
The large capacity of 56 Liter can be placed on a tabletop by compact design, front water and automatic pipe filling almost make it have no restrictions on placement.

Prime B series with 8 pre-sets, 1 customizable program, 1 drying function, 1 cleaning function, and 3 diagnostic tests

Icon	Program	Steri. Temp.	Steri. Time	Dry Time	Cycle Time *
	Unwrapped 121°C	121 °C	15 mins	10 mins	51 mins
	Unwrapped 134°C	134 °C	4 mins	10 mins	61 mins
	Wrapped 121°C	121 °C	15 mins	15 mins	76 mins
	Wrapped 134°C	134 °C	4 mins	15 mins	39 mins
	Instrument 121°C	121 °C	15 mins	2 mins	28 mins
	Instrument 134°C	134 °C	4 mins	2 mins	48 mins
	Prion	134 °C	18 mins	30 mins	72 mins
	Flash	134 °C	3 mins 30 secs	1 mins	17 mins

\* Cycle time is based on: 1 kg standard load and warm chamber by Prime 30B (30 Liter).  
Cycle time may vary according to load size.

▼ Prime 30B (30 Liters)

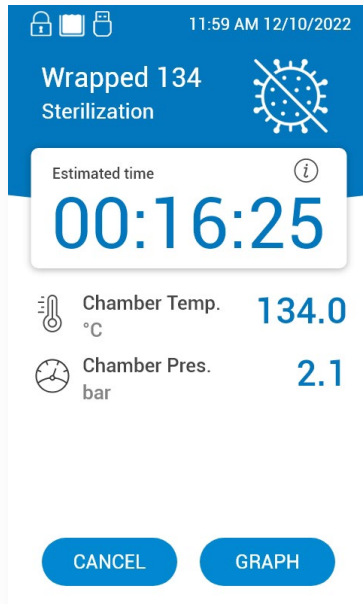


▼ Prime 56B (56 Liters)



# Innovation is for better operation experience

5" touch screen, easy operation process, sterilization at the click of a button



## ◆ Touch Screen

The extremely user-friendly 5-inch full-color touch screen, with a specially designed user interface, can be set with 6 program shortcuts, making the operator's daily work faster and more efficient.

## ◆ Countdown Timer

The end time of the cycle is displayed as a countdown timer, making the operator clearly know the expected end time, and arranging the work more accurately without wasting time.

## ◆ Real-time Display

The sterilization temperature, pressure and other information of the entire cycle are displayed on the screen in real time, and can be switched to the graph, making it easier to monitor the data.

## ◆ EZ Light Process Indicator

The EZ Light sterilization progress light composed of LEDs reflects the sterilization status by different color, providing you with valuable information at a glance.

### Blue Light

The sterilizer is standby

### Blue Light (blinking)

Cycle is in running

### Green Light

Cycle is complete, load sterilized

### Red Light

Warning, cycle error



\* Light Process Indicator

# Reliable Data Recording System

The sterilization record is digitized and it completely records all details of sterilization data, including operator ID, Loading message, increasing traceability and reducing routine recording work in an efficient way.



**Step.1**  
Print the barcode label and apply to each load



**Step.2**  
Scan barcode login ID and load barcode



**Step.3**  
Place load into the chamber



**Step.4**  
Complete sterilization cycle



**Step.5**  
Scan barcode to record detailed sterilization data

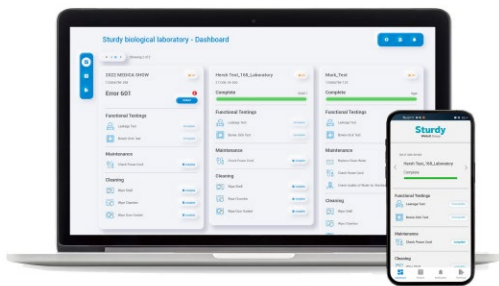


✓ **Process completed**

# Free your hands from complicated paperwork

Prime series has a new comprehensive and scalable traceability system.

The complete details of the sterilization cycle are stored in the internal memory and the data can be transferred via RJ-45 or Wi-Fi to the SteriProcess IoT database for archiving, allowing you to manage sterilization data more easily, efficiently and conveniently, or using FileCheck software, you can view and use sterilization data.



## SteriProcess IoT Server (optional)

- Automatic recording of cycle data to IoT server (Via ethernet or Wi-Fi).
- View the real-time status of the sterilization remotely.
- No filing required or printouts, saving you time.
- Easily generate PDF reports.
- Online repair request, save trouble.
- Sterilization team management
- Maintenance reminders to reduce maintenance costs

## FileCheck Software (standard)

- All cycle data is in the digital format for storage and visualization.
- Data can further be analyzed or printed out by a PC or laptop.



# Specification

## Prime 30B model

Model No.	Prime 30B
Chamber Volume	Ø 300 x 452 (mm) / Ø 11.8 x 17.8 (inch)
Chamber Size (Ø x Depth)	30 Liters / 7.9 Gallons
Pressure Vessel Material	316L Stainless Steel
Design Temperature	142 °C
Sterilization Temperature	121 °C / 134 °C
Design Pressure	0.28 Mpa (2.8 bar)
Overall Dimension (W x H x D)	584 x 480 x 670 mm
Net Weight	73.5 kg / 162 lbs
Power Consumption	Steam Generator: 2,000 W
	Bend-Heater: 900 W
	Vacuum Pump: 100 W
Power Supply	230V, 50-60 Hz
Current (Max.)	13.1 A
Temperature Indicator	Digital Display
Pressure Indicator	Digital Display & Pressure Gauge
Status Indicator	LED Light (Blue, Blue-blinking, Green, Red)
Air Removal	Pre-Vacuum
Dry	Post-Vacuum
Air Filter	≤ 0.3 µm HEPA Filter x 1 pc
Data Recorder	Build-in 2 GB Memory
Data Printer	Thermal Printer
Water Reservoir Capacity	5 Liters / 1.3 Gallons
Water Filling	Manual (front) or Automatic (rear back connected to the pipe)
Water Drain	Manual (front quick coupling)
Water Level Indicator	Digital Display (full, middle, low level)
Waste Water Reservoir Capacity	5 Liters / 1.3 Gallons
Waste Water Drain	Manual (front quick coupling)
Used Water Level Indicator	Digital Display (full level)
Water Consumption	900 ml
Altitude	Under 3,000 m
Program	<ul style="list-style-type: none"> <li>● Unwrapped 121 °C</li> <li>● Unwrapped 134 °C</li> </ul>
	<ul style="list-style-type: none"> <li>● Wrapped 121 °C</li> <li>● Wrapped 134 °C</li> </ul>
	<ul style="list-style-type: none"> <li>● Instrument 121 °C</li> <li>● Instrument 134 °C</li> </ul>
	<ul style="list-style-type: none"> <li>● Prion</li> <li>● Flash</li> </ul>
	<ul style="list-style-type: none"> <li>● Dry</li> <li>● Customer</li> <li>● Cleaning</li> </ul>
	<ul style="list-style-type: none"> <li>● Leakage Test</li> <li>● B &amp; D Test</li> <li>● Helix Test</li> </ul>
Safety Device	<ul style="list-style-type: none"> <li>● Automatic door lock (pressure &amp; temperature dual sensing)</li> <li>● Double door lock sensor</li> <li>● Pressure release during power interruption</li> <li>● Overheat protection device</li> <li>● Overpressure protection device</li> <li>● Temperature and pressure sensor break detection</li> <li>● Cycle error notification</li> <li>● Safety valve</li> </ul>
	ISO 13485:2016 Quality Management System - Medical Devices
	PED 2014/68/EU Pressure Equipment Directive
	ASME BPVC Section VIII-1 Rules for Construction of Pressure Vessels
	EN 13060 Small Steam Sterilizer
	EN/IEC 61010-1 Safety Requirements for measurement control and laboratory use
	EN/IEC 61010-2-040 Safety requirements for sterilizers used to treat medical materials
EN/IEC 61326-1 EMC	
RoHS Restriction of Hazardous Substances Directive 2011/65/EU)	



# Specification

## Prime 56B model

Model No.	Prime 56B
Chamber Volume	Ø 380 x 522 (mm) / Ø 15 x 20.6 (inch)
Chamber Size (Ø x Depth)	56 Liters / 14.8 Gallons
Pressure Vessel Material	316L Stainless Steel
Design Temperature	142 °C
Sterilization Temperature	121 °C / 134 °C
Design Pressure	0.28 Mpa (2.8 bar)
Overall Dimension (W x H x D)	719 (W) x 536 (H) x 728 (D) (mm) / 28.3 (W) x 21.1 (H) x 28.7 (D) (inch)
Net Weight	105.5 kg / 232.6 lbs
Power Consumption	Steam Generator: 2,000 W
	Bend-Heater: 900 W
	Vacuum Pump: 100 W
Power Supply	230V, 50-60 Hz
Current (Max.)	13.1 A
Temperature Indicator	Digital Display
Pressure Indicator	Digital Display & Pressure Gauge
Status Indicator	LED Light (Blue, Blue-blinking, Green, Red)
Air Removal	Pre-Vacuum
Dry	Post-Vacuum
Air Filter	≤ 0.3 µm HEPA Filter x 2 pcs
Data Recorder	Build-in 2 GB Memory
Data Printer	Thermal Printer
Water Reservoir Capacity	8 Liters / 2.1 Gallons
Water Filling	Manual (front) or Automatic (rear back connected to the pipe)
Water Drain	Manual (front quick coupling)
Water Level Indicator	Digital Display (full, middle, low level)
Waste Water Reservoir Capacity	8 Liters / 2.1 Gallons
Waste Water Drain	Manual (front quick coupling)
Waste Water Level Indicator	Digital Display (full level)
Water Consumption	1,500 ml
Altitude	Under 3,000 m
Program	<ul style="list-style-type: none"> <li>● Unwrapped 121 °C</li> <li>● Unwrapped 134 °C</li> <li>● Wrapped 121 °C</li> <li>● Wrapped 134 °C</li> <li>● Instrument 121 °C</li> <li>● Instrument 134 °C</li> <li>● Prion</li> <li>● Flash</li> <li>● Dry</li> <li>● Customer</li> <li>● Cleaning</li> <li>● Leakage Test</li> <li>● B &amp; D Test</li> <li>● Helix Test</li> </ul>
	<ul style="list-style-type: none"> <li>● Automatic door lock (pressure &amp; temperature dual sensing)</li> <li>● Double door lock sensor</li> <li>● Pressure release during power interruption</li> <li>● Overheat protection device</li> <li>● Overpressure protection device</li> <li>● Temperature and pressure sensor break detection</li> <li>● Cycle error notification</li> <li>● Safety valve</li> </ul>
	<ul style="list-style-type: none"> <li>● ISO 13485:2016 Quality Management System - Medical Devices</li> <li>● PED 2014/68/EU Pressure Equipment Directive</li> <li>● ASME BPVC Section VIII-1 Rules for Construction of Pressure Vessels</li> <li>● EN 13060 Small Steam Sterilizer</li> <li>● EN/IEC 61010-1 Safety Requirements for measurement control and laboratory use</li> <li>● EN/IEC 61010-2-040 Safety requirements for sterilizers used to treat medical materials</li> <li>● EN/IEC 61326-1 EMC</li> <li>● RoHS Restriction of Hazardous Substances Directive 2011/65/EU</li> </ul>
Standards and Directives	<ul style="list-style-type: none"> <li>● ISO 13485:2016 Quality Management System - Medical Devices</li> <li>● PED 2014/68/EU Pressure Equipment Directive</li> <li>● ASME BPVC Section VIII-1 Rules for Construction of Pressure Vessels</li> <li>● EN 13060 Small Steam Sterilizer</li> <li>● EN/IEC 61010-1 Safety Requirements for measurement control and laboratory use</li> <li>● EN/IEC 61010-2-040 Safety requirements for sterilizers used to treat medical materials</li> <li>● EN/IEC 61326-1 EMC</li> <li>● RoHS Restriction of Hazardous Substances Directive 2011/65/EU</li> </ul>

# Standard Accessories

Starter kit included



## Tray Set

Square tray holder with a capacity of four perforated sieve trays, made of 304 stainless steel.

Tray Dimensions (W x H x D) :

30B : 203 x 32 x 368 mm

56B : 280 x 38 x 409 mm

- User Manual x 1 pc.,
- FileCheck Software x 1 pc.,
- Quick Drain Tube x 1 pc.,
- Cham-mate x 2 pcs.,
- Printer Paper x 5 pcs.

## Consumables :



### HEPA Air Filter

Filtering effect of air particles under  $0.3\mu\text{m}$  is over 99.99%

(Prime 30B include 1 pc., Prime 56B 2 pcs.)



### Printer Paper

Used to print sterilization data on thermal printer

(All models include 5 pcs.)



### Cham-mate Cleaner

Autoclave chamber & piping cleaner

(All models include 2 bags)



### Drain Filter

Filter the impurities in the waste water to avoid clogging the pipe

(All models include 1 pc.)

## Optional Accessories



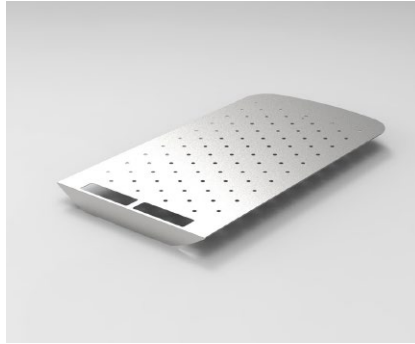
### Wire - Mesh Basket

Sterilization basket, made of 304 stainless steel.

Dimensions (W x H x D):

30B: 215 x 190 x 375 mm

56B: 295 x 215 x 380 mm



### Universal Plate

A 304 stainless steel support surface that is suitable for any sterilization load.

Dimensions (W x D) :

30B: 140 x 404 (mm)

56B: 265 x 465 (mm)



### Wi-Fi Dongle

Support hot swapping, so that the Prime Series can receive wireless network signal.



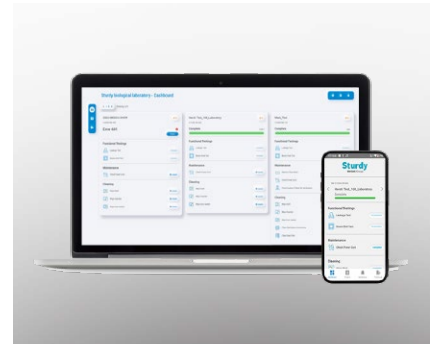
### Barcode Scanner

Barcode for scanning sterilization load to record sterilization data.



### Barcode Printer

Sterilization labels for continuous production, safely tag load in a few simple steps.



### SteriProcess IoT Server

A web, mobile devices and application that allows you to view the status of autoclaves wherever you are, and save a backup of the cycle history database on server for management analysis.



### Water Distiller

Turns water into steam to remove fluoride lead, viruses and other contaminants protecting your sterilizer and instruments at a fraction of cost.



### RO Water Filter

Filter out dirt odor, chlorine and salt extending life usage of the sterilizer and improve water quality.

Professional design and manufacturer of autoclaves /sterilizers with

Product distribution to clinics, hospitals and laboratories in more than

Provide sales and after-sales service worldwide with more than

**30 years'**  
**experience**

**80+**  
**countries**

**400+**  
**distributors**

## Durable, Authentic & Efficient Sterilization

Establishment in 1992, Sturdy as one of the leaders of autoclave in Taiwan. It is committed to providing reliable and durable autoclave worldwide for nearly 30 years. In fact Sturdy has its presence in more than 80 countries and has 400 distributors around the world.

Its Sturdy's business philosophy of integrity, innovation, safety, quality and practicality demonstrates through its products.

Relying on decades of Sterilization expertise, comprehensive education and training, good after-sales service are also available.

From design, development to manufacturing, our autoclaves are 100% MIT (Made in Taiwan) and all products pass stringent safety and quality standards and directives such as ISO 13485, CE, Taiwan QMS/GMP, PED, FDA 510K, and ASME.

As such, Sturdy prides itself of being your **"Reliable Sterilization Partner - Sturdy"**.



### Sturdy Industrial Co., Ltd.

No. 168, Sec. 1, Zhongxing Road, Wugu District,  
New Taipei City 248012, Taiwan  
T: +886 2 2981 5245  
F: +886 2 2987 8208 (Office)  
E: foreign@sturdy.com.tw  
**www.sturdy.com.tw**

Distributed by :