



SA-232 Poleax Series

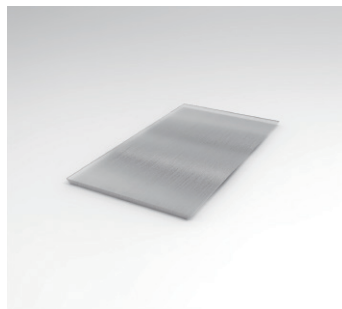
SA-232 autoclaves are controlled by Microprocessor.
They offer advantages such as power conservation,
water conservation and reduced maintenance due to less parts.
Control panels are designed with simple controls for basic sterilization tasks.

Model No.	SA-232
Chamber Volume	16 Liters / 4.2 Gallons
Chamber Size (Ø x Depth)	Ø 230 x 410 (mm) / Ø 9.1 x 16.1 (inch)
Pressure Vessel Material	304 Stainless Steel
Design Temperature	140 °C
Sterilization Temperature	126 °C (1.4 bar)
Sterilization Time	18 min for UNWRAPPED, 33 min for WRAPPED
Overall Dimension (W x H x D)	335 (W) x 430 (H) x 510 (D) (mm) / 13.2 (W) x 17 (H) x 20.1 (D) (inch)
Net Weight	15.5 kg / 34.2 lb
Power Supply	230 VAC, 50-60 Hz 110 VAC, 50-60 Hz
Power Consumption	1,400 W (230 VAC) 1,200 W (110 VAC)
Water Fill	Manual filling of water into the chamber
Water Consumption	350 ~ 400 cc
Pre-Program	UNWRAPPED WRAPPED
Safety Device	Overpressure protection device Safety valve
Standards and Directives	ISO 13485:2016 Quality Management System - Medical Devices 93/42/EEC Medical Device Directive PED 2014/68/EU Pressure Equipment Directive EN/IEC 61010-1 Safety Requirements for measurement control and laboratory use EN/IEC 61010-2-040 Safety requirements for sterilizers used to treat medical materials EN/IEC 61326-1 for EMC Requirements for electrical software RoHS Restriction of Hazardous Substances Directive 2011/65/EU

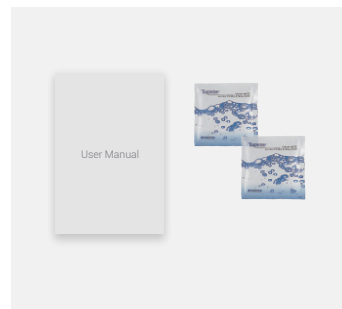
Standard Accessories



Sterilization Box
All models with 1 set.



Heater Cover
All models with 1 set.



Starter kit
All models with

- User Manual x 1 pc.,
- Cham-mate Cleaner x 2 bags.

Sturdy
Wellell Group

No. 168, Sec. 1, Zhongxing Road, Wugu District,
New Taipei City 248012, Taiwan
T: +886 2 2981 5245
F: +886 2 2987 8208 (Office)
E: foreign@sturdy.com.tw
www.sturdy.com.tw



Sturdy reserves the rights to improve the equipment shown without prior notice.

CE 2460 CE 0035

