



SA-232X Autoclave/Sterilizer Microprocessor



- Simple Panel EZ Control
- Closed Door Drying
- Pressure Auto Door Lock
- Door Safety Latch
- Overheat Protection
- Pressure Overload Protection

Reliable Sterilization Partner



BEST FOR VALUE

Minimum cost, maximum efficiency
High durability reduces maintenance costs



IT'S ALL SIMPLE

Easy operation process, intuitive indicator
Convenient and reliable, sterilization for everyone

Features ▼

Simple Control

Just Filling water, set the sterilization program and start. The sterilizer is designed for automatic sterilization without any additional operate, only need to do is wait for it to be completed.

Process Indicator Light

Intuitive indicators, you can easily track each phase of the sterilization process and be alerted when sterilization is complete.

Auto Exhaust and Drain *

Automatic pressure release and water drain, greatly shorten the sterilization cycle time.

Closed Door Drying *

When the sterilization is completed, it will automatically enter the drying program by air pump. Closed door drying improves the 90% Drying efficiency.

HEPA Air Filter *

Using high efficiency HEPA air filter, the filtering effect of air particles below $0.03\mu\text{m}$ is over 99.99% to ensure that the sterilized items are not affected by the external environment and remain sterilized during the drying process.

The air filter not only meets the requirements of EN 13060 for air filters, but also meets the BFE and VFE filtration efficiency as high as 99.999%.

* For Optional Functions



SAFETY

Constant safety and steadfast efficiency that's the perfect sterilizer we're provided.

Pressure Auto Door Lock

When the chamber starts to pressurize the door lock will automatically locked to ensure user's safety.



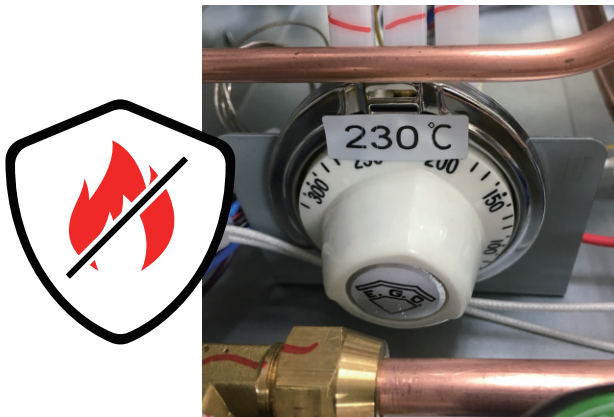
Door Safety Latch

A latch mechanism is the second door lock protection device, double check for safety.



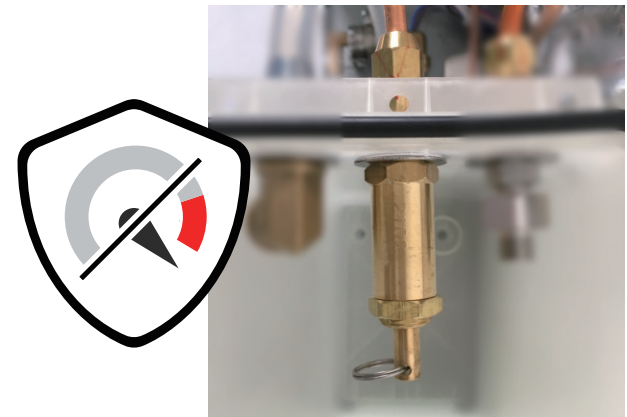
Overheat Protection

During the sterilization cycle, if the temperature is too high due to error, the protector will cut off the power to prevent the sterilizer from overheat protecting the user's safety and extending the life of the equipment.



Pressure Overload Protection

During the sterilization cycle, if the pressure is too high due to error, the protector will automatically reduces the pressure to prevent the sterilizer from overpressure protecting the user's safety and extending the life of the equipment.



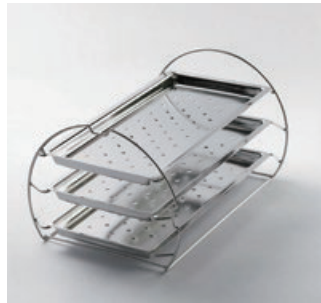
Model NO.		SA-232X
Chamber Volume		16 Liters / 4.2 Gallons
Chamber Size		Ø 230 x 410 (mm)
Diameter x Depth		Ø 9.06 x 16.14 (inch)
Overall Dimensions		501 X 406 X 537 (mm)
W x H x D		19.72 x 15.98 x 21.14 (inch)
Net Weight		28 kg / 62 lbs
Water Fill		Tank-Man*
Water Tank Volume		4200 (cc)
Water Consumption (Per cycle)		300-450 (cc)
Control System		Microprocessor
Temperature Options		118 ~ 134 (°C)
Sterilization Time		4 / 15 / 30 (min)
Dry (Optional)		Auto Exhaust and Drain, Closed Door Drying with Air Pump
Dry Time (Optional)		18 (min)
Voltage(V)		230V / 110V, 50/60Hz
Current(A) Power(W)	Non Dry (Standard)	11A / 1,200W (110V) 6.1A / 1,400W (230V)
	Dry with Air Pump (Optional)	14.6A / 1,600W (110V) 7.9A / 1,800W (230V)
Safety Device		<ul style="list-style-type: none"> • Pressure Auto Door Lock • Door Safety Latch • Overheat Protection • Pressure Overload Protection
Standards and Directives		PED 2014/68/EU (Pressure Equipment Directive) EN 61010-1 (Safety Requirements for measurement control and laboratory use) EN 61010-2-040 (Safety requirements for sterilizers used to treat medical materials) EN 61326-1 (EMC; Electrical equipment for measurement, control and laboratory use) ISO 13485:2016 Medical Devices - Quality Management Systems RoHS (Restriction of Hazardous Substances Directive 2011/65/EU)

* "Tank-Man" - Contains water tank but still requires knob to be manually turned on/off to fill chamber.

Accessories



Basket
(standard)



Tray Set
(optional)



Box
(optional)



Air Filter
(optional)



RO Water Filter
(optional)



Water Distiller
(optional)



Cham-Mate
(standard)



SA-232X

SA-252F

SA-300H

Model NO.	Control System	Chamber Volume	Sterilization Time	Dry Time	Overall Dimensions	Net Weight
SA-232X	Microprocessor	16 L	4 / 15 / 30 min	18 min	501 x 406 x 537 (mm)	28 kg
SA-252F	Electrical Machinery	24 L	0 ~ 60 min	0 ~ 60 min	540 x 450 x 630 (mm)	45 kg
SA-300H	Electrical Machinery	40 L	0 ~ 60 min	0 ~ 60 min	600 x 470 x 740 (mm)	66 kg

Durable, Authentic & Efficient Sterilization

Establishment in 1992, STURDY as one of the leaders of autoclave in Taiwan. It is committed to providing reliable and durable autoclave worldwide for nearly 30years. In fact, STURDY has its presence in more than 80 countries and has 400 distributors around the world.

Its STURDY's business philosophy of integrity, innovation, safety, quality and practicality demonstrates through its products.

Relying on decades of Sterilization expertise, comprehensive education and training, good after-sales service are also available.

From design, development to manufacturing, our autoclaves are 100% MIT (Made in Taiwan) and all products pass stringent safety and quality standards and directives such as ISO 13485 , CE ,Taiwan GMP, PED, FDA 510K, ASME.

As such, STURDY prides itself of being your "Reliable Sterilization Partner - STURDY".



STURDY
APEX GROUP

168, Sec. 1, Zhongxing Road, Wugu District,
New Taipei City 24872, Taiwan
Tel: 886-2-2981-5245
Fax: 886-2-2984-8208(Office)
Email: foreign@sturdy.com.tw
www.sturdy.com.tw



Distributed by :