



Glareless LED  
Surgical Light **SLM** Series



## Characteristics

1. Internationally patented high efficient reflecting LED.
2. Glareless lighting protects doctors and patients eyes.
3. High CRI.
4. Color temperature is optimized at 4300°K or 3800°K (optional) to ensure clarity of operating field.
5. The dual-controller, 1 design on the lamp and 1 IR remote controllers can be hung on the wall or carry.
6. Easily adjust the intensity 0-100% by Knob or by IR remote controller will not move or shaking lamp.
7. Adjustable microsurgery lighting mode (MIS).
8. True environment friendly "GREEN" lighting. SLM series delivers 160,000Lux at 40W.
9. Patented heat sink structure keeps LED cooler, increasing LED life and efficiency.
10. Lowest heat to light ratio: 3.17mw/m<sup>2</sup> lux.
11. Focusable from 60cm to 180cm.
12. Universal medical grade power supply.
13. Smooth easy-to-clean non-ageing aluminum light head cover.
14. Polycarbonate lens cover has imbedded 4410 lens in SLM series.
15. Multiple combination with SLM series for different applications.
16. Sterile light head handle is reusable and autoclavable.

### SLM-100C (Single lighthouse)



SLM Side View

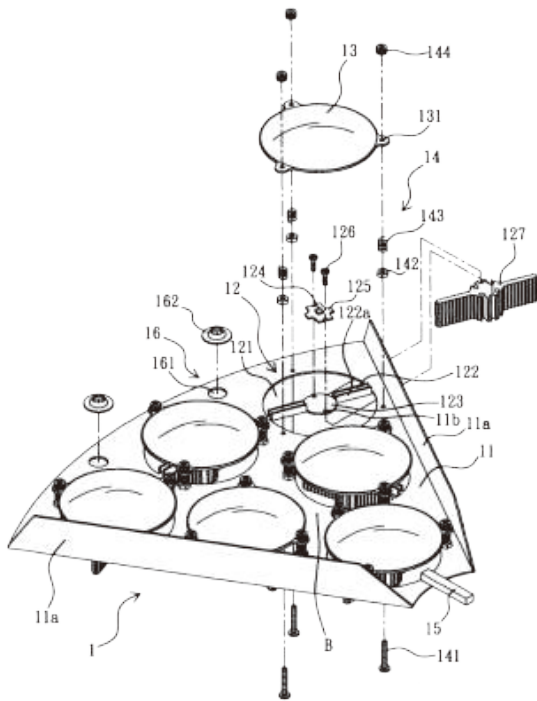
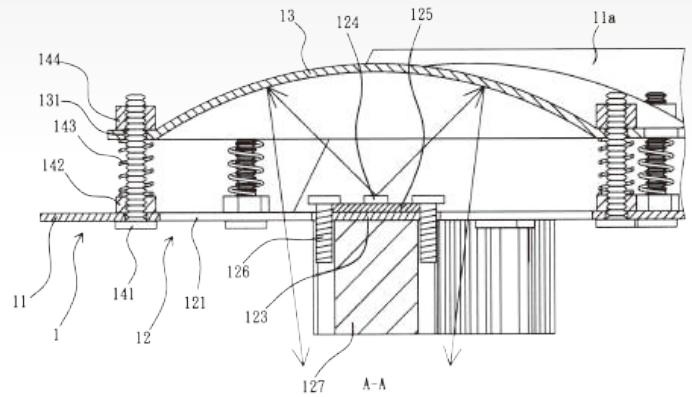
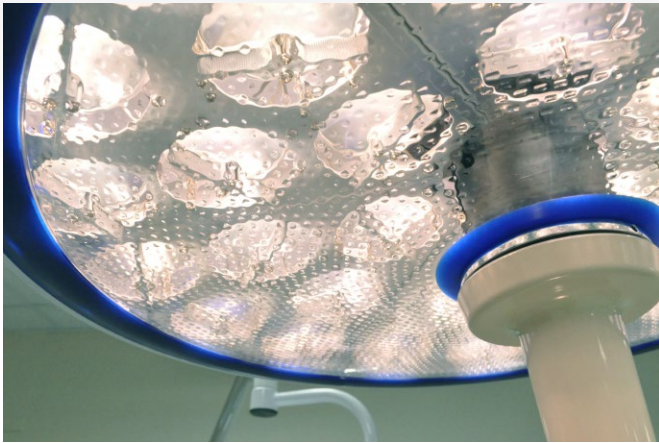
### SLM-101C (Dual lighthouse)



IR Controller

## GLARELESS principle

LED is a small light emitting strong light on, CA 4mm emitting 100lm flux in the area, is equal to the 25lm/mm the light intensity, but the majority on the market LED surgery lamp lens concentrators mining mode, direct external irradiation, light is directly exposed to, it is easy to inadvertently because of the look of irritation and damage. In view of this, SLM Series design with reflector, LED lights back operating lamp light direction, light around see the luminous, each LED has its foreign individual reflector, each reflector diameter of 64mm, diluted light intensity is only 0.03lm, about 0.12% of the lens, it can eliminate glare.



## Patented

Under each led has a heatsink can be led lights leading to the heat generated by the chip guide ensure that led does not heat exhaustion, ensure that the color temperature does not drift, life expectancy of 50, 000 hours or more.



USA Patented



TW Patented



CN Patented

## Specification

Technical index	SLM series
Light Head Diameter	57 cm
Articulation Radius	170/183/198 cm Or by order
Light Head Height Adjustment	105 cm
Illuminate Mode	Reflect LED
Central Illuminance /1M	0 ~ 160,000 Lux/each
MIS (ENDO Light)	0 ~ 28,000 Lux
* Color Temperature	4300°K (Optional : 3800°K)
* Color Rendering Index (Ra)	95
* Focusable Light Head Height	60 ~ 180 cm
* Depth of Light	60 cm
* Depth of Illumination (L1 + L2)	115 cm
* Light field diameter	12 ~ 25 cm
LED Quantity (each light head)	24
* LED Life	50,000 Hrs
* Heat to Light Ratio	3.17mw/m <sup>2</sup> lux
* Maximum power	40W At 160,000 Lux/1m
Power Supply	AC100 ~ 240V

[Color Temperature 3800°K warm white light is optional]

\* Tolerance ± 5%

The specifications can be manufactured by order

### Models :

- Ceiling mounted type: SLM-100C (Single lighthouse)  
SLM-101C (Dual lighthouse)  
SLM-111C (Triple lighthouse)
- Wall mounted type: SLM-100W (Single lighthouse)
- Mobile type: SLM-100M (Single lighthouse)



STURDY INDUSTRIAL CO., LTD.

No.168, Sec. 1, Zhongxing Road, Wugu District,  
New Taipei City 24872, Taiwan  
T +886 - 2 2981 - 5245  
F +886 - 2 2984 - 8208  
foreign@sturdy.com.tw  
www.sturdy.com.tw



Sturdy reserves the right to improve the products herein without prior notice.