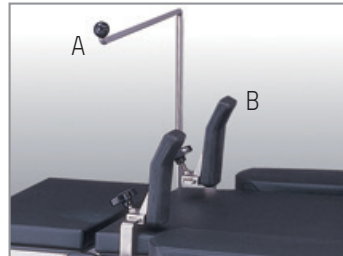


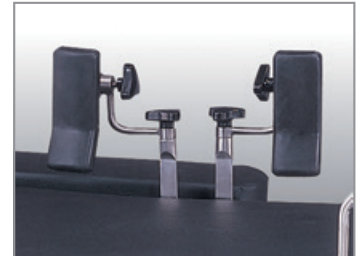
# Accessories Of Electric Tables



A.STA-001 Screen Frame  
B.STA-002 Shoulder Supporter



STA-003  
Arm Board



STA-004  
Chest & Waist Supporter



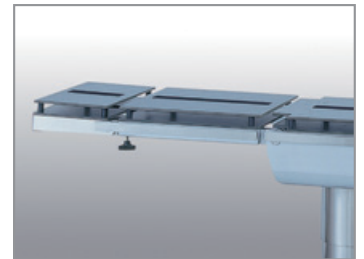
STA-005  
Leg Crutch Supporter (PU foam)



STA-006  
Control Box (Standard Type)



STA-007  
Control Box (For R. B. Use)



STA-008  
X-Ray Radiograph Transfer Sheet



STA-009  
Hand Frame For Microscopic  
Operation



A.STA-010 U-Type Head Rest (X-Ray  
Radiograph Transfer Design)  
B.STA-011 Attachment Rack



STA-012  
Neurological-Surgery Head Rest  
for Sitting Position



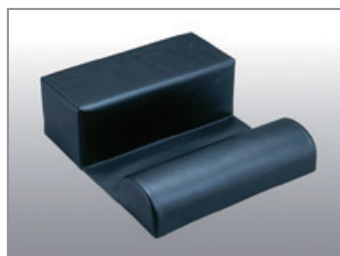
STA-013  
Knee Supporter with mattress



STA-014  
Dorsal Operation Frame



STA-015  
Kidney Elevator



STA-016  
Head / Shoulder / Arm Rest For  
Kidney Operation



STA-017  
Arm Rest for lie on the side



STA-019  
Accessories Cart



STA-020  
Head Rest with Doctor's Arm Rest



STA-021  
Assistant Control Box  
(Fixed On The Table)



STA-022  
Foot Control Switch (Water Proof)

# Accessories Of Electric Tables



STA-023  
Accessories Clamp (Light-Type)



STA-024  
Accessories Clamp (Heavy-Type-A)



STA-025  
Accessories Clamp (Heavy-Type-B)



STA-026  
Orthopedic Tractor  
(A-Type Operation Table Use)



STA-027  
Strap (Simple Type)



STA-028  
Body Strap (Soft-Type)



STA-029  
Funnel & Contamination Bucket



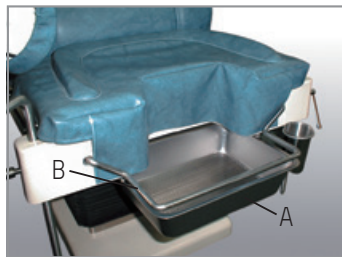
STA-030  
Instruments Tray (Adjustable)



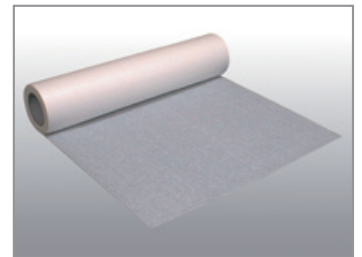
STA-031  
Extension Board (For leg supporter)



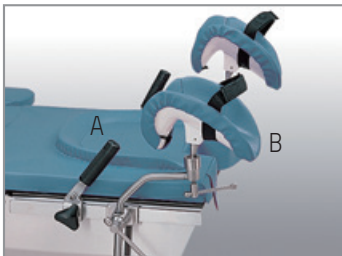
STA-032  
Delivery Tray



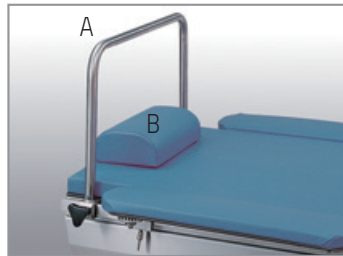
A.STA-033 Contamination Basin  
(For Gynecological Exam. Table)  
B.STA-034  
Protection Frame



STA-035  
Paper Roll  
(For Gynecological Exam. Table)



A.STA-036  
Waist Side Handles with Clamps  
B.STA-037  
Leg Crutch Supporter  
(Medium-Type) with mattress



A.STA-038 Head Side Handle with  
Clamps  
B.STA-039 Pillow



STA-040  
Heavy Type Leg Crutch Supporter  
with Slipper and Clamps



STA-041  
Contamination Basin  
(Delivery Table Use)

